

-57 (iii)-
103/c-
324/98/2014
ANNE XUR II
324:98:2014
Isha Chaudhary

NOTE:

- The agenda for Earmarking of additional 66 KV ESS in the Layout plan of Sectors G7, G8, G2, G5, G3 & G4 in Zone P-1 was discussed in the 309th Screening Committee meeting held on 29.10.12 vide Item no. 125:2012. The S.C. has approved and recommended the proposal for consideration of the Authority under sub-Clause: 8(2) Permission of use premises in Use Zones of MPD-2021. (In File F3(01)/2009-MP)
- The agenda was prepared on the basis of feasibility submitted by EE/ND-12 and EE/ND-9. (In File F3(01)/2009-MP)
- The agenda was considered & approved in the Authority meeting held on 11.12.2012 vide Item no. 88/12. (In File F3(01)/2009-MP)
- Modification has been done on the LOP as available in the record.

DELHI DEVELOPMENT AUTHORITY
APPROVED IN... 324... SCREENING COMMITTEE
MEETING HELD ON... 02.09.2014 ITEM NO. 98:2014.

The Agenda for "Approval of locations of proposed three Mini STP's for EWS housing schemes of DDA in Narela Pocket G7-G8, G3-G4 & G2-G6", were Approved in the 324th Screening Committee meeting held on 02/09/2014 vide Item No. 98:2014.

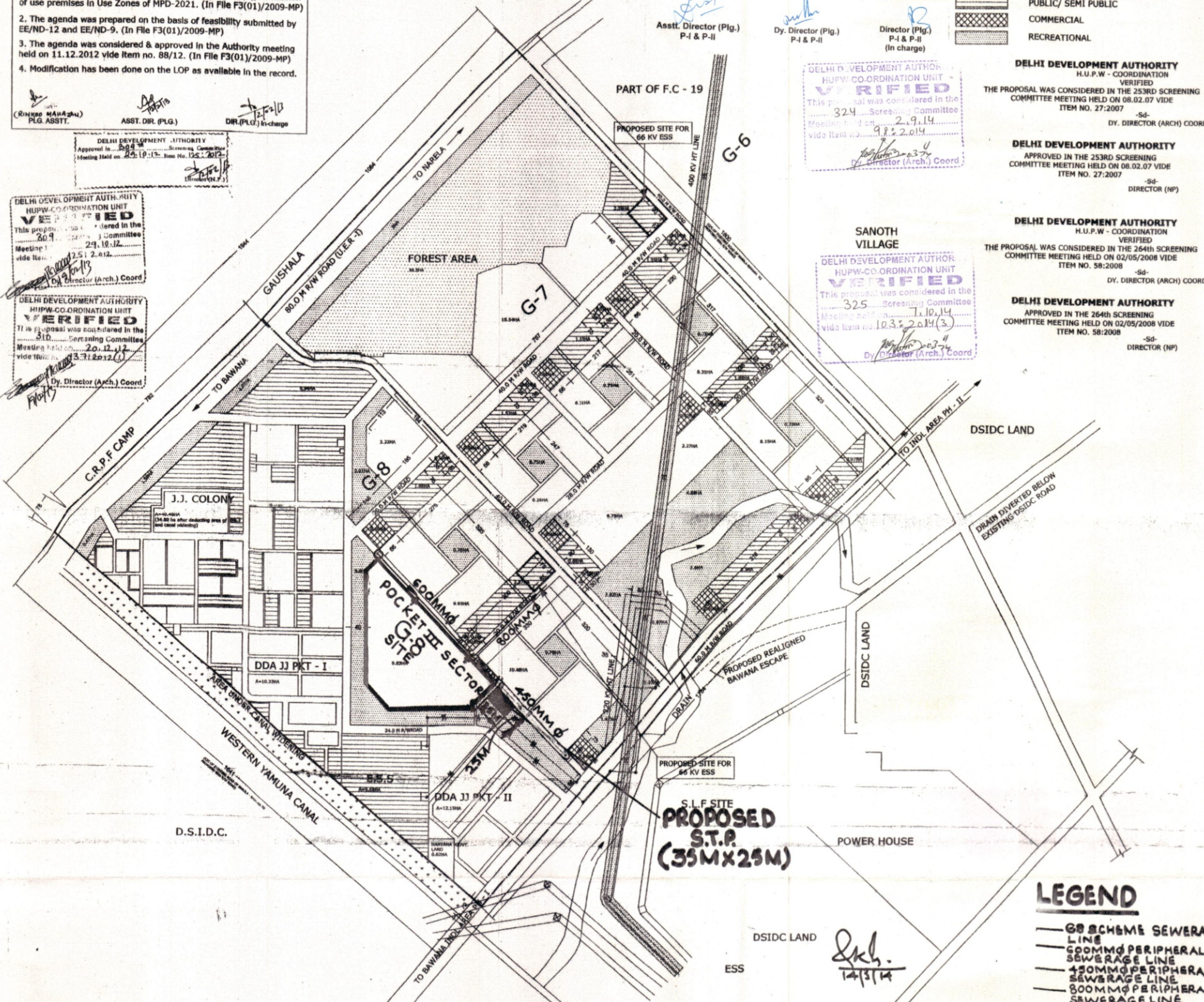
LEGEND

- SECTOR BOUNDARY
- ACQUIRED LAND BOUNDARY
- RESIDENTIAL
- PUBLIC/ SEMI PUBLIC
- COMMERCIAL
- RECREATIONAL

DELHI DEVELOPMENT AUTHORITY
H.U.P.W. CO-ORDINATION UNIT
VERIFIED
This proposal was considered in the 324th Screening Committee Meeting held on 29.10.12 vide Item no. 125:2012
Dy. Director (Arch. Coord.)

DELHI DEVELOPMENT AUTHORITY
H.U.P.W. CO-ORDINATION UNIT
VERIFIED
This proposal was considered in the 324th Screening Committee Meeting held on 29.10.12 vide Item no. 125:2012
Dy. Director (Arch. Coord.)

DELHI DEVELOPMENT AUTHORITY
H.U.P.W. CO-ORDINATION UNIT
VERIFIED
This proposal was considered in the 324th Screening Committee Meeting held on 29.10.12 vide Item no. 125:2012
Dy. Director (Arch. Coord.)



DELHI DEVELOPMENT AUTHORITY
H.U.P.W. CO-ORDINATION UNIT
VERIFIED
This proposal was considered in the 324th Screening Committee Meeting held on 29.10.12 vide Item no. 125:2012
Dy. Director (Arch. Coord.)

DELHI DEVELOPMENT AUTHORITY
H.U.P.W. CO-ORDINATION UNIT
VERIFIED
This proposal was considered in the 325th Screening Committee Meeting held on 1.10.14 vide Item no. 103:2014(3)
Dy. Director (Arch. Coord.)

DELHI DEVELOPMENT AUTHORITY
H.U.P.W. CO-ORDINATION UNIT
VERIFIED
THE PROPOSAL WAS CONSIDERED IN THE 253RD SCREENING COMMITTEE MEETING HELD ON 08.02.07 VIDE ITEM NO. 27:2007
Dy. DIRECTOR (ARCH) COORD.

DELHI DEVELOPMENT AUTHORITY
H.U.P.W. CO-ORDINATION UNIT
VERIFIED
THE PROPOSAL WAS CONSIDERED IN THE 254TH SCREENING COMMITTEE MEETING HELD ON 02/05/2008 VIDE ITEM NO. 58:2008
Dy. DIRECTOR (ARCH) COORD.

DELHI DEVELOPMENT AUTHORITY
H.U.P.W. CO-ORDINATION UNIT
VERIFIED
THE PROPOSAL WAS CONSIDERED IN THE 264TH SCREENING COMMITTEE MEETING HELD ON 02/05/2008 VIDE ITEM NO. 58:2008
Dy. DIRECTOR (NP)

DELHI DEVELOPMENT AUTHORITY
H.U.P.W. CO-ORDINATION UNIT
VERIFIED
APPROVED IN THE 264TH SCREENING COMMITTEE MEETING HELD ON 02/05/2008 VIDE ITEM NO. 58:2008
Dy. DIRECTOR (NP)

DELHI DEVELOPMENT AUTHORITY

LANDUSE DISTRIBUTION (ZONAL LEVEL)

(AS PER ZDP)	(IN HA)	(%AGE)
1. GROSS RESIDENTIAL	228.82*	76.53
2. COMMERCIAL	NIL	NIL
3. MANUFACTURING	NIL	NIL
4. PUB & SEMI PUB	2.18	0.73
5. RECREATIONAL	36.54	12.22
6. UTILITY	7.66	2.56
7. TRANSPORTATION	23.80	7.86
TOTAL AREA	299.00	100

PROPOSED POPULATION @500 PPH = 114410 PERSONS
TOTAL DWELLING UNIT @5 PERSONS/ DWELLING = 22882

* The area of 57.28 Ha is under the existing Slum & JJ pockets, which is also a part of Gross Residential Area.

DISTRIBUTION OF GROSS RESIDENTIAL AREA

	As in 253rd Screening Committee (IN HA)	(%AGE)	As per modifications (IN HA)	(%AGE)
1. NET RESIDENTIAL	100.10	43.75	122.54	53.55
2. COMMERCIAL	9.40	4.10	6.77	2.96
3. PUBLIC/ S. PUBLIC	32.72	14.30	31.46	13.75
4. RECREATIONAL	55.53	24.27	31.93	13.95
5. CIRCULATION	31.07	13.58	36.12**	15.79
TOTAL AREA	228.82	100	228.82	100

** The 12m wide or above roads of existing three pockets of slum & JJ settlements has been included in the circulation area.

DISTRIBUTION OF FACILITIES (AS PER M.P.D. 2021)

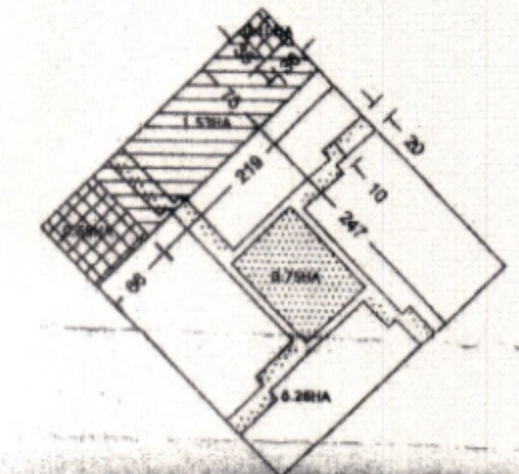
	NO.
1. PRIMARY /MIDDLE SCHOOL	17
2. SR. SECONDARY SCHOOL	8
3. MILK BOOTH	17
4. RELIGIOUS BUILDING	16
5. MULTIPURPOSE/COMMUNITY HALL	8
6. DHALAO	AS/REQ
7. TAXI STAND	AS/REQ
8. ESS 11 KV	AS/REQ
9. POLICE POST	1
10. L.P.G. GODDOWNS	3
11. FAMILY WELFARE CENTRE	2
12. MATERNITY HOME	2
13. NURSING HOME	2
14. DISPENSARY	1

DISTRIBUTION OF COMMERCIAL AREA

1. C.S.C. (9 shown in drawing & 9 are part of L.S.C)	18
2. L.S.C	9

Note:
BANQUET HALL, SERVICE MKT, INFORMAL BAZAAR, HOSPITAL CATEGORY C&D, COMMUNITY RECREATIONAL CLUB, SOCIO CULTURAL ACTIVITIES WILL BE PROVIDED AS PER REQUIREMENT IN FACILITY AREA.
THE FACILITIES PROVIDED IN THE EXISTING J.J. SLUM SCHEMES IN SEC G-8 HAS NOT BEEN INCLUDED

PLACED IN THE 252nd SCREENING COMMITTEE MEETING HELD ON 7.12.06 VIDE ITEM NO. 152:2006.
MINOR ADJUSTMENTS IN THE SCHEME APPROVED BY COMMISSIONER (PLG) VIDE F-12 (269)2006/NP/PT II DATED 30.04.07(PG. N/16)
EXISTING DRAIN/NALLAH WILL BE DEVELOPED AS LANDSCAPE CORRIDOR LIKE THAT OF DILLI HAAT.



APPROVED IN THE 253rd SCREENING COMMITTEE MEETING HELD ON 08.02.07 VIDE ITEM NO. 27:2007.
APPROVED H.T. LINE CORRIDOR 264TH SCREENING MEETING

TITLE: PROPOSED MODIFIED COMPOSITE STRUCTURE PLAN OF SECTOR G-7 & G-8, NARELA SUBCITY

SCALE: 1:1000	DATE: 10/04/2007	DEALT BY:	DRAWING NO.: 482-R
PLG. ASST.:	ASST. DIR.:	JT DIR. (PLG.)	NORTH:
DIR. (PLG.)	ADDL. COMM. (PLG.)	COMM. (PLG.)	

NARELA PROJECT
DDA PLANNING UNIT

LEGEND

- 60 SCHEME SEWERAGE LINE
- 450MM PERIPHERAL SEWERAGE LINE
- 450MM PERIPHERAL SEWERAGE LINE
- 800MM PERIPHERAL SEWERAGE LINE
- PROPOSED S.T.P. (35Mx25M)

Assistant Engineer (Civil)
Northern Division-8
Delhi Development Authority